



# ALU TECH

ALU TECH ALUMINIUM & GLASS WORKS

YOUR TRUSTED  
PARTNER IN  
ALUMINIUM, UPVC &  
GLASS WORKS



**WORDS FROM THE FOUNDERS**

"Consistent Excellence in the industry is a goal sought by all  
reached by few  
sustained by companies such as us,  
**ALU Tech for Aluminum & UPVC.** We will strive to be an  
exceptional and superior company within the manufacturing  
industry of Architectural Aluminum and steel  
by providing the very highest level of integrity, accountability and professional  
service to all our customers."

**ISMAIL MOHAMED  
ABDELAZIZ MOUSSA**

**Managing Director**

**TALAL SAIF OBAID  
MAJED AL MEHEIRI**

**Local partner**

## **INDEX**

- I - Introduction**
- II - Services of ALU Tech Aluminium and Glass works**
- III - Organization chart & personal staff**
- IV - Machines and Equipment's**
- V - Ongoing / Completed Projects in UAE**
- VI - Quality Policy**
- VII - Occupational Health and Safety policy**
- VIII - ENVIRONMENTAL STRATEGY**

## INTRODUCTION

ALU TECH Aluminium & UPVC Specializes in the manufacturing of Aluminum architectural products, for the housing sector from residential villas to commercial high rise buildings, services sector from schools to hospitals.

ALU TECH Aluminum & UPVC success is the product of skilled engineers, experienced craftsman, customized tooling and intelligent response to customer's needs.

ALU TECH works aims to assist you in achieving your business goals. Want to build solid, easy and quality business experiences that is relevant to your needs.

Our Managing Director: **Mr. Ismail Mohamed Abdelaziz Moussa**, a Professional Based in UAE since 13 years of field experience (Since 2004) and operational solely in year 2021.

ALU TECH works corner stone of business is to provide high quality product Works in Fabrication and services of Steel Structures, Aluminium Doors, Windows and Facades with Frames and Frameless Solutions, in addition Skylights, Pergolas, ACP Cladding As per ADCD Requirements, Stainless Steel and Steel Railing, Decorative Elements on Construction Buildings at prices most fair to every clients not just around UAE but Internationally.

### **Our Commitment:**

In ALU TECH Works, quality is a fitness for purpose. Our team is set up to carry on the Company's relentless commitment to quality products and services. Ensuring of superior quality reaches to our clients; for us to improve the efficiency and effectiveness of our company operations. ALU TECH Works is intimately on quality and excellence. And our products and services are about consistency and integrity.

**VISION:**

We are competent and positive looking organization which envisions ourselves to be a leading company in Engineering and Fabrication of Aluminium and Steel with superior quality of products and hands-on services for local, national and international clients.

**MISSION:**

We dedicate ourselves to the holistic and maximum competency of services tendered to our clients, with high values, culture of excellence and professionalism which we commit ourselves to live in for market competition globally.

**GOALS:**

1. To supply most product and services with international standard.
2. To promote competitive marketing strategies to gain more access to the world market.
3. To be globally competitive in Engineering & Fabrication of Steel within the company's hence employee's skills, competitiveness and commitment to good quality products and services through good management system.

**ALU TECH Principles**

- **Integrity.** We are honest, consistent, fair in all aspects of our behavior, and we communicate openly and directly.
- **Customer Satisfaction.** We will strive to exceed customers' expectations and will dedicate our time and efforts to deliver a quality service to all clients.
- **Commitment to Innovation.** We consider that learning and development is a continuous process. Consequently, we will adapt a state of the art technology and practices to enhance the efficiency of our operations.
- **Safety.** Our employees are the most important assets. Therefore, we will offer safe and sustainable working conditions for them
- **Team Work.** We will seek to attract and develop leading talents, and create an environment where individual growth is the foundation of company growth.

## **Services of ALU Tech Aluminium and Glass works**

ALU TECH take the opportunity to introduce the full range of system of custom designed aluminum windows and door as well as UPVC door, window, Cladding system according to client requirement with municipality requirements.

Here are some Accomplished Projects by the Team in the Past years, The Team Experienced 12years In Aluminium, UPVC and Steel works, and Familiar of Requirements at site to Avoid Mistakes.

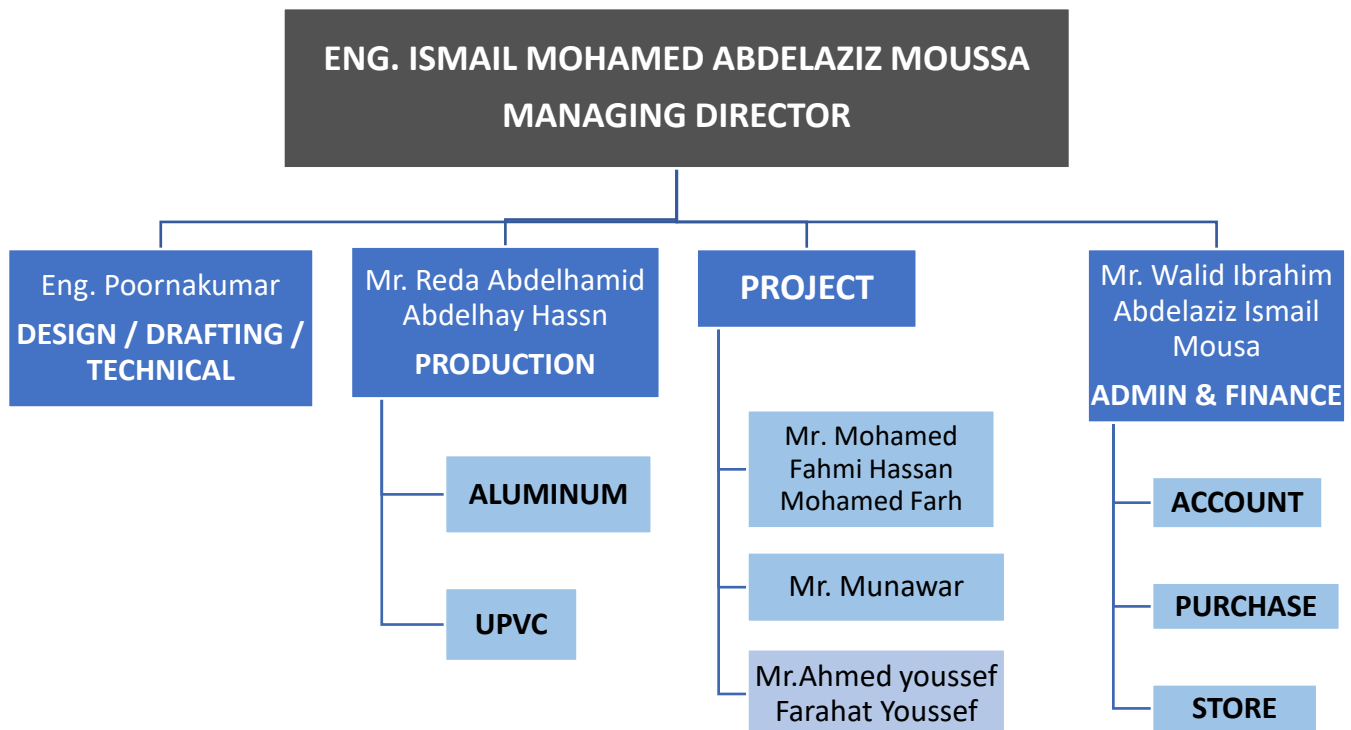
### **SPECIALIZED IN THE FOLLOWING FIELD OF WORKS:**

- Aluminium Façade, Framed or Frameless
- UPVC window and Doors
- Hand Railing Aluminium, Steel or Stainless Steel
- Steel Structures, lite and Heavy Platforms, Sheds and Walkways, Etc.,
- Steel Clamps and Brackets.
- Kitchen Cabinet and accessories
- Aluminum Cladding Interior & Exterior,
- Window, Doors, Gates & Aluminum Curtains.
- Frameless Glasses for Interiors & Exteriors,
- Sky Lights & Doods Glasses (Aluminium & Steel)
- Pergolas and Canopies,
- Staircase and Ladders (Steel & Aluminium)
- Metal Fencing, Cladding, Roofing and Frame Fabrication (Steel & Aluminium)



**Organization chart & personal staff**

**ORGANIZATION CHART**



**ISMAIL MOHAMED ABDELAZIZ**

**MOUSSA Abu Dhabi, UAE**

**Mob: +971 566650757**

**Email ID: alutech.ae@gmail.com**



## **OBJECTIVE**

To make a sound position in corporate world and work enthusiastically in team to achieve goal of the organization with devotion and hard work.

## **PROFESSIONAL SUMMARY**

A competent and goal-oriented professional with **13** years of experience in supervision on installation of UPVC & Aluminum doors, windows, louvers, sky light, curtain walls, canopies, handrails, steel and stainless steel works. Knowledgeable in handle projects related to furniture and décor. Dedicated and committed, willing to take the challenging roles, tough assignments and work to tight deadline and I've set my career objectives to the level in which I can work among a professional environment, utilize my background & experience to achieve organization goals.

## **WORK EXPERIENCES**

### **MANAGING DIRECTOR**

**ALU TECH Aluminum and Glass Works, Abu Dhabi, UAE (ALUMINUM & UPVC)**

Worked closely with the CEO to evaluate a variety of technology systems and customize a platform incorporated the best functionalities of these systems in one consolidated application to standardize operating procedures across

My duties are not only responsible for the Production and Installation departments but also responsible for the human resource and finance departments. In such assignment, I am responsible for the whole project operation from estimation, contract negotiation, signing, material purchase and supply till project handing over including project budgeting and financing.

In addition I am leading the process of building new company system in cooperation with QA/QC system and third party.

**JOB RESPONSIBILITIES ARE:**

- Pricing the tenders,
- All legal documentation & preparation to sign the contract with the Contractor & Consultant,
- Financing the operation through banks,
- Procurement of material,
- Supervisor of production and installation,
- Invoicing and collection through a huge number of projects manager all around the kingdom.
- Responsible for recruiting the engineering staff of the department.
- Leading project managers to accomplish the projects on schedule within budget.
- Leading the planning department in scheduling the time frame of the projects and controlling the material stock.
- Pricing the tenders and budgeting the projects processes.
- Incorporated technological processes to speed up completion of projects.
- Collaborated with project managers in conceiving new project proposal

**PROJECT ENGINEER****Sabat International Metal Construction L.L.C, Abu Dhabi, UAE**

My responsibilities were to study and evaluate the existing production line, installation and the manpower in order to upgrade the factory. In addition, I took the responsibilities of hiring new management team, technical dept. engineers and technician staff, purchasing new machines, introducing new techniques to solve problem at sites.

**JOB RESPONSIBILITIES ARE:**

- Technical meeting with Engineers
- Technical Proposal
- Organizing, Design and Participating in project development works
- Marketing presentation of Products
- Re-organize the working facility and the production lines flow
- Train the work force.
- Control the triple constrain of time, budget and schedule.
- Following up the job orders and Co-ordinates the peoples in site.

- Purchasing of all raw materials required for the production lines from local and international markets.
- Ensured prompt submission of project drawings based on specifications.
- Took charge of the procurement of aluminum and glass material for projects.

**MAJOR PROJECTS HANDLED:**

- **TAKREER RUWAIS REFINERY EXPANSION PROJECT**  
Lab Building & Central control Building  
(Aluminium & Glass works)
- **ADNOC RUWAIS HOUSING COMPLEX**  
Temporary Guest House  
(Aluminium & Glass works)
- **SCHLUMBERGER MLC-MEA ACCOMMODATION AT AL SHAWAMEKH**  
(Aluminium & Glass works)

**SITE SUPERVISOR**

**UBS ALUMINUM & UPVC, Abu Dhabi & Al Ain, UAE**

Overseeing daily operations, conducting regular inspections, devising and implementing site procedures, preparing and filing reports, handling emergencies, supervising and evaluating staff, setting project goals, scheduling and tracking assignments, ensuring compliance with health and safety regulations and fostering relationship with clients.

**JOB RESPONSIBILITIES ARE:**

- Understand and follow instructions, directions, safety rules and procedures.
- Commercial negotiation, including obtaining new business
- Managing relations and project staff
- Assisting the manager in performance management (coaching, counseling, disciplining, performance evaluations, recognition, etc.)
- Perform repetitive tasks for extended periods of time.
- Work long hours in all kinds of weather.
- Read blueprints and construction plans, maintain equipment and manage paperwork
- Work on the project site alongside the crew

## **MAJOR PROJECTS HANDLED**

- **ADNOC TECHNICAL INSTITUTE (ATI)**  
Location: Sas Al Nakheel  
(Aluminum & Glass works)
- **ADNOC PI ACCOMMODATION**  
Location: Sas Al Nakheel  
(Aluminum & Glass works)
- **ABU DHABI LOUVRE MUSEUM AT**  
Location: Saadiyath Island  
(Aluminum & Glass works)
- **AL WATHBA CAMEL RACE GRANDSTAND**

## **GENERAL FOREMAN**

**Al Masriyyah Aluminum, Egypt**  
**Jan 2004 – Till April 2008**

- Manages workers, motivates them to complete projects on schedule
- Ensures that the crew complies with site rules and regulations while monitoring their work
- Foremen also collaborate with clients, suppliers and other stakeholders to ensure all aspects of the Project proceed as planned
- Excellent knowledge in Finishing and Interiors work in Hotels and Luxurious Residential projects.

## **Communication and Interpersonal skills**

- Ambitious, hard worker, self-motivated and determined
- Process oriented, well organized, with excellent communication skills
- Ability to Work under Pressure, a team player

## **Personal Profile**

**Date of Birth:** 12th February 1987

**Sex:** Male

**Marital Status:** Married

**Nationality:** Egypt

**Religion:** Muslim

**Languages:** Arabic, English & Urdu

**Passport No:** A 07773482

**UAE Driving License:** Valid

# CURRICULLUM VITAE



**Poornakumar**

Design Engineer 

poornakumarcad@gmail.com 

(971)543971718 

<https://www.linkedin.com/in/poorna-design/> 

## Objective:

Versatile and highly motivated drafting professional with a solid reputation for generating results. Multi-disciplined problem solver who effectively communicated with all levels of people and departments within an organization and able to meet aggressive deadlines, Juggle multiple priorities independently or in a team environment.

## Profile Summary

- Having **7 years** of Experience in **AutoCAD, STAAD PRO, and TEKLA**, Bill of material, document maintainer and Purchase Request.
- Other Responsibilities are support to cross functional team to enhance the quality of design & Production.

## Skills:

- Solid knowledge/experience in the use CAD systems (specifically AutoCAD) and TEKLA (3D modelling and 2D drafting).
- Good knowledge of structural analysis and design software
- Experience in Structural Load Calculation using STAAD PRO
- Proficiency with SOLIDWORKS & CREO and ability to create 3D models.
- Excellent proficiency in drafting techniques.
- Strong knowledge of design techniques, tools, and principles involved in production of precision technical plans, blueprints, drawings, and models.
- Sound technical expertise when applying engineering principles, techniques and methods to design of steel structural projects.
- Proficient with Primavera Software and capable of data entry in Primavera.
- Has working knowledge of computer networks and be able to install, maintain, operate and troubleshoot large format plotters.

## Technical Software Skills:

- AutoCAD – Expert (Usage 7+ Years)
- STAAD Pro V8i – Intermediate (Usage 3+ Years)
- IDEA STATICA – Intermediate (Usage 2+ Years)
- Tekla – Intermediate (Usage 2+ Years)
- Solid Works – Intermediate (Usage 3+ Years)
- Creo Parametric - Expert (Usage 4+ Years)
- FLIXO – Intermediate (Usage 4+ Years)

## Software Skills:

- MS Office – Expert
- Outlook – Expert

## Educational Qualification:

**MASTER OF ENGINEERING IN CAD CAM**

**MECHANICAL ENGINEERING**

**ANNA UNIVERSITY**

**KSR INSTITUTE FOR ENGINEERING AND TECHNOLOGY**

**2015**

**CGPA: 9.17 with First class, Distinction and Gold Medal**

## Experience:

### **Design & Analysis Engineer (May 2020 – DEC 2021)**

**Kynar Metal & Glass Works, Abu Dhabi, U.A.E**



#### **Duties & Responsibilities:**

- Preparing & Reviewed shop drawings for compliance with design specifications including connections, erect ability and shipping limits.
- Make drawings, specifications and computer models of structures for main contractors.
- Ensured details were safe of high quality and cost effective.
- Review and extracts engineering information from CAD Drawings.
- Prepares and reviews structural models using common structural analysis software such as STAAD PRO.
- Responded to shop drawing RFIs from detailers, fabricators and erectors.
- Perform site survey, prepare as-built drawings.
- Prepares engineering designs computations, sketches, and review final design drawings/documents.
- Provides technical guidance to Design Engineers, CAD Designer/Drafters working on the same project
- Conducted visits to fabricators for project start up and resolution of critical issues.
- Communicated issues up the chain of command.

### **Steel Detailing Engineer (Sep 2018 – April 2020)**

**SAMA STEEL L.L.C, Abu Dhabi, U.A.E**



[www.samasteel.com](http://www.samasteel.com)

#### **Duties & Responsibilities:**

- Preparing Steel Structure, Canopy, Skid Structural design Detailed models
- Preparing U-Value Detailed Report for Façade Element.
- Preparing Isometric Drawing, Detailed Steel Drawings with the ISO Standards.
- Read & review of Customer Drawings to state the Deviations and getting clarified with the customer
- Preparing, checking, reviewing and revising the drawings and Design calculations / Specifications before submitting to client for approval.
- Work closely with other Designer and Engineers to ensure a co-ordinate design.
- Creating Material Cutting List for the Pipe & Structural Steel Beams.
- Creating the Detailed Bill of Material for Supporting the Estimation Department.
- Preparing Purchase Request for Exact Material Purchasing Purpose Considering based on Hook-up and GA Drawings.

### **Mechanical Software Engineer (May 2017 – July 2018)**

**Musheref Institute, Ajman, U.A.E**

#### **Duties & Responsibilities:**

- Teaching the usage of drafting tools and techniques in AutoCAD software.
- Giving training on creating 2D&3D modeling in engineering back ground software.
- Develop training sessions, tools, guidelines and programs for deliver to users and internal staff.
- Giving training on Generate accurate 3D models using data from 2D sketches and AutoCAD drawings.
- Giving training to create proper detailed shop drawing for fabrication process.
- Training to Improve and/or create new textures to use on existing models.



## Design Engineer (June 2016 – Feb 2017)

Vision Tech Engineer, Coimbatore, INDIA



### Duties & Responsibilities:

- Perform Load Calculation for steel and Aluminium Structures
- Prepared tender prices and quantities from drawings and designs. Calculated cost estimates for projects, compiled and analysed data that influenced cost estimates.
- Create various technical drawings based on Project Specifications and Calculations.
- Prepared estimates for Mechanical Engineering works from specifications.
- Prepares As-built drawings in the prescribed computer sheet given by the Client/Consultant and assist in Project closeouts.
- Maintains knowledge of Company standards and incorporate these into engineering design.
- Troubleshoot field issues and performed site visits as required for problem resolution.
- Cooperating and communicating with the Project Manager and other project participants and collaborating with Senior Engineers to create more efficient project methods.

## Design Engineer (June 2015 – May 2016)

Unique Toolings, Coimbatore, INDIA



### Duties & Responsibilities:

- Creating accurate CAD drawings from hand sketches, verbal instructions.
- Prepare assembly and detail drawing on the basis of the information and instruction provided.
- Creating CNC Plasma Machine Cutting Code Using OmniCAD nesting Software.
- Printing various formats of drawing sets for project managers and production team.
- Performing calculations for materials and weight limitations.
- Maintain notes, revision, design calculation and other documentation for future reference.

## Senior CAD Engineer (June 2016 – Feb 2017)

Vision Tech Engineer, Erode, INDIA



### Duties & Responsibilities:

- Giving training on creating 2D&3D modeling in engineering back ground software.
- Install software to various industries and train the industrial professional
- Make the site visit and develop the 3D model of the product.
- Create various technical drawings based on Project Specifications and Calculations as per client request.
- Prepares As-built drawings in the prescribed computer sheet given by the Client and assist in Project close-Outs.
- Maintained software and hardware tools that are used for training purpose.
- Given training on rectifying the error occurred during working on engineering software.
- Teaching the concept of basic general engineering mathematical calculation.

### Major Projects involved:

Main Contractor: PROMPT Steel Building & Contracting

Project: LYCEE THEODORE MONOD SCHOOL

Year: 2020 & 2021

Work Involved:

Performed Curtain Wall Thermal U-Value Calculation as per EN ISO 10077 & EN ISO 12631.

**Main Contractor:** National Innovative General Maintenance  
**Sub-Contractor:** Rotaj Aluminium Establishment  
**Project:** Family Development Foundation  
**Year:** 2020 & 2021  
**Work Involved:** Structural Calculation for Canopy, Pergola and Steel Decorative Beams as per ADIBC

**Main Contractor:** FORCE 10 UAE  
**Sub-Contractor:** Alumina For Aluminium & Glass  
**Project:** Ali Al Ahabbi Building / Residential Building  
**Year:** 2020 & 2021  
**Work Involved:** Façade Thermal U-Value Calculation as per EN ISO 10077 & EN ISO 12631

**Main Contractor:** FICONT (Five Star General Contracting & Maintenance Est)  
**Sub-Contractor:** White Aluminium Ent. Architectural Aluminium  
**Project:** Commercial Building for Mr. Salem Saeed Salem Buhaqeb Al Shamsi at Baniyas East 2-3  
**Year:** 2020 & 2021  
**Work Involved:**  
Structural Calculation, Connection Design for Steel Pergola  
Structural Calculation, Connection Design for Steel Structure for Cladding and  
Structural Calculation for Aluminium Curtain Wall

**Main Contractor:** FORCE 10 UAE  
**Sub-Contractor:** Alumina For Aluminium & Glass  
**Project:** Emirate National School – Al Ain  
**Year:** 2020 & 2021  
**Work Involved:** Thermal U-Value Calculation as per EN ISO 10077 & EN ISO 12631

**Main Contractor:** National Innovative General Maintenance  
**Sub-Contractor:** Rotaj Aluminium Establishment  
**Project:** Medium And Small Courts In Abu Dhabi, Al Dhafra Region  
**Year:** 2020 & 2021  
**Work Involved:** Façade Thermal U-Value Calculation as per EN ISO 10077 & EN ISO 12631

**Main Contractor:** Freiburg Contracting & General Maintenance  
**Project:** Al Khalidyya International Shipping Warehouse  
**Year:** 2018 & 2020  
**Work Involved:**  
Steel Structure for Curtain Wall: Performed Load Calculation and Design Steel Structure as per BS 5950:2000  
Designed Cat Ladder with Cage as per American National Standard A14.3.1984

**Main Contractor:** Trans Capital  
**Project:** WESTERN SOUK  
**Year:** 2018 & 2020  
**Work Involved:** Performed Curtain Wall Thermal U-Value Calculation as per EN ISO 10077 & EN ISO 12631.

**Main Contractor:** Capital Contracting  
**Project:** DEWAN RULER  
**Year:** 2018 & 2020  
**Work Involved:**  
Steel Skylight: Performed and submitted detailed load calculation Report (Structure, Connection, Fixing Strength)  
Aluminium Pergola: Developed Design (Load Calculation, Bolt Selection, Shop Drawing, Connection Design)

### **Professional Certification:**

**Reda Abdelhamid Abdelhay Hassan**  
**Production Incharge**  
**ALU TECH**  
**(Aluminium & Glass Works)**



---

## **OBJECTIVE:**

Highly organized, efficient, flexible and versatile team player to work hard and fit to any environment, Dedicated and committed, willing to take the challenging roles, tough assignments

## **PROFESSIONAL SUMMARY**

A Production Supervisor with almost **15 years** of working Experience in technical and commercial experience, fabrication and Installation of curtain wall, windows, and special constructions and cladding industries in the Middle East. To deliver quality services by effective utilization of resources. Skill sets in Estimation, supervision on site works (productivity, Process improvement, wastage reduction, idle time etc....) for the overall Growth of organization.

## **Systems worked with:**

1. Alumil
2. Gulf Extrusion
3. Al jaber Extrusions
4. Technal
5. UPVC
6. Operating various aluminum and UPVC machineries.

## **Work Experience:**

### **Alutech Aluminium and Glass Works (Factory In charge).**

A company dealing with architectural UPVC and Aluminum works in Abu Dhabi.

My duties includes Ensure that the materials used and the executed works are in full compliance with project specifications. Making Material Submittal, Inspections Requests to the client. Witnessing and sentencing of all site inspections within their disciplines. Ensure that all inspection reports are accurate and that all attached documents are current status.

## **Responsibilities:**

- Coordinate tasks according to priorities and plans
- Produce schedules and monitor attendance of crew
- Allocate general and daily responsibilities
- Ensure man power and resource are adequate
- Guarantee all safety precautions and quality standards are met
- Supervise the use of machinery and equipment
- Monitor expenditure and ensure it remains within budget
- Resolve problems when they arise
- Report on progress to managers, engineers etc.
- Prepares Work schedules to ensure efficient operations.
- Oversees production operations on assigned shift.
- Maintain knowledge of processes and equipment.
- Ensures that products are identified, weighed, and warehoused correctly.
- Troubleshoots issues that arise.
- Notifies maintenance department of equipment problems.
- Ensures that employees comply with applicable safety regulations, policies and procedures.
- Ensures paperwork is completed and signed correctly
- Ensures that products are identified, weighed, and warehoused correctly.
- Performs other related duties as assigned.

## **Areas of Interest:**

Manufacturing Process

Project Coordinating & Takeover

## **Personal Profile:**

**Name:** Reda Abdelhamid Abdelhay Hassn

**Date of Birth:** 08<sup>th</sup> January 1974

**Passport No.:** A26647650

**Linguistic Abilities:** Arabic English and Urdu

**Declaration:** - I declare that the facts stated above are true and correct to the best of my knowledge and belief.



### **Career Objective:**

To deliver quality services by effective utilization of sources, perform many tasks efficiently, supervision on site works (productivity, Process improvement, wastage, idle time etc....) for the overall Growth of organization.

### **Profile Summary**

A Site Foreman with almost 4.5 years of working Experience in Aluminium curtain wall, windows, and special constructions and cladding industries in the Middle East. Committed to provide excellent service in Aluminium and UPVC door and windows installation. I am an organized, reliable and hardworking in individual. Having experience in inspection of water leakage test for curtain wall.

### **Systems worked with:**

#### **Aluminium System**

- Alumil
- Gulf Extrusion
- Al Jaber Extrusions
- White Aluminium

### **Work Experience:**

#### **ALU TECH Aluminium and Glass Works**

A company dealing with architectural Aluminum and UPVC division in Abu Dhabi

#### **Responsibilities:**

- Coordinate tasks according to priorities and plans
- Produce schedules and monitor attendance of crew
- Allocate general and daily responsibilities

- Ensure man power and resource are adequate
- Guarantee all safety precautions and quality standards are met
- Supervise the use of machinery and equipment
- Monitor expenditure and ensure it remains within budget
- Resolve problems when they arise
- Report on progress to managers, engineers etc.
- Strategic organizing and coordinating competence.
- Management abilities in areas like field problem solving aspects.
- Ability to monitor all aspects from production & quality through completion.
- Working knowledge of quantity surveying and various contract forms.
- Ability to work at own initiative under pressure and deadlines.
- Strong inter-personal communication.

### **Areas of Interest:**

Manufacturing Process

Project Coordinating & Takeover

### **Personal Profile:**

**Name:** Mohamed Fahmi Hassan Mohamed Farh

**Date of Birth:** 19<sup>th</sup> November 1995

**Passport No.:** A22005704

**Linguistic Abilities:** Arabic English and Urdu

**Declaration:** - I declare that the facts stated above are true and correct to the best of my knowledge and belief.

**Munawar**  
Site Foreman  
ALU TECH  
Aluminum and Glass Works



---

### Career Objective:

To apply my current knowledge, experience and skills in the field of glass and aluminum & UPVC by engaging myself in a challenging position that meets my competencies, capabilities and skills. A position wherein there is an opportunity to further enhance my professional abilities and personal development and above all to be contribute to the growth of the company through hard work.

### Profile Summary

A Site Foreman with almost 7 years of working Experience in Aluminium and glass field, curtain wall, windows, and special constructions and cladding Industries in the Middle East. Excelled in all glass installation field work.

### Systems worked with:

- White Aluminium
- Gulf Extrusion
- Al Jaber Extrusions
- Technal

### Work Experience:

Presently working with **ALU TECH Aluminium and Glass Works** as site foreman. This company dealing with architectural Aluminum, Glass and UPVC division in Abu Dhabi

### Responsibilities:

- Responsible for all the site measurement and installation of Aluminium doors and windows, curtain walls, unitized system, structure glazing and aluminum louver panels
- Assist the project manager in the overall supervision of the installation of doors and windows, pergola
- Follow up for material for installation
- Coordinate with all other foreman daily and update which area in high priority

- Makes weekly report to the Division manager
- Coordinate with the store to expedite delivery of consumable materials
- Knowledge in aluminum profiles used in aluminum curtain wall, hinged, sliding windows and doors
- Responsible for labors and timing
- In-charge of all installation of aluminum and glass
- Handling of labor and disseminate them on the different job sites.
- Perform quality check on installation work
- Ability to read construction drawing and blue prints.
- Solve disputes between works

### **Areas of Interest:**

Manufacturing Process

Project Coordinating & Takeover

### **Personal Profile:**

**Name:** Munawar

**Date of Birth:** 03<sup>th</sup> March 1988

**Passport No.:** L5714291

**Linguistic Abilities:** Arabic English and Urdu

**Declaration:** - I declare that the facts stated above are true and correct to the best of my knowledge and belief.

WALID IBRAHIM ABDELAZIZ ISMAIL  
ADMIN  
ALU TECH  
Aluminum and Glass Works



---

### Career Objective:

To apply my current knowledge, experience and skills in the field of Administration by engaging myself in a challenging position that meets my competencies, capabilities and skills. A position wherein there is an opportunity to further enhance my professional abilities and personal development and above all to be contribute to the growth of the company through hard work.

### Profile Summary

Office Administrator having working Experience in purchase, office maintenance, and strong knowledge of Microsoft excel and Microsoft word, Project file coordinator & Document controller

### Work Experience:

Presently working with **ALU TECH Aluminium and Glass Works** as Office Admin. This company dealing with architectural Aluminum, Glass and UPVC division in Abu Dhabi

### Responsibilities:

- Create and send purchasing orders
- Negotiate and renegotiate with suppliers
- Research and Evaluate suppliers
- Monitor purchase through delivery process
- Evaluate supplier performance
- High attention to detail in ordering materials
- Make quick decisions to avoid delay in project work flow
- Ability to work independently
- Print various drawings required for production and Installation
- Schedules company meetings, prepares all the necessary documents and sets up conference venue
- Maintained stock inventory database and furnished reports to department heads
- Prepared invoice and organized delivery schedules

## **Communication and Interpersonal skills**

- Organizational skills
- Written and verbal communication skills
- Negotiation and conflict resolution skills
- Ambitious, hard worker, self-motivated and determined
- Process oriented, well organized, with excellent communication skills
- Ability to Work under Pressure, a team player

## **Personal Profile:**

**Name:** Walid Ibrahim Abdelaziz Ismail

**Passport No.:** A28850785

**Linguistic Abilities:** Arabic English and Urdu

**Declaration:** - I declare that the facts stated above are true and correct to the best of my knowledge and belief.

**Machines & Equipment's**





**ALU TECH**  
ALU TECH ALUMINIUM  
AND GLASS WORKS

**PREQUALIFICATION DOCUMENTS**





**ALU TECH**  
ALU TECH ALUMINIUM  
AND GLASS WORKS

**PREQUALIFICATION DOCUMENTS**



**Ongoing / Completed Projects in UAE**

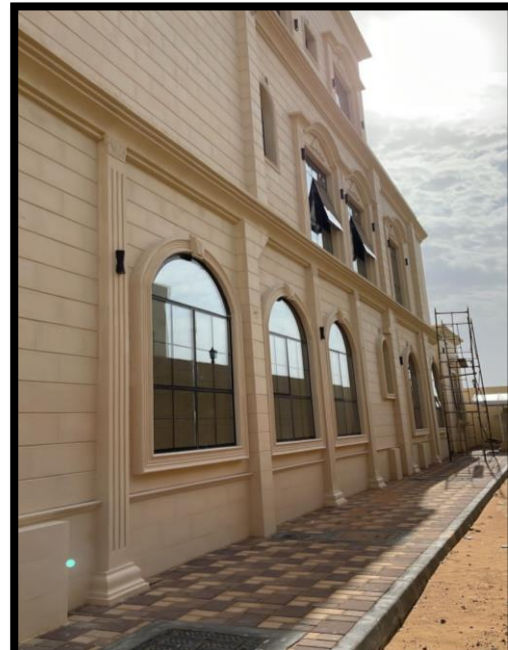
S.No	Project Name	Construction	consultant	Status	Project Start	Projec Finsih
1	Villa for Moza Rashid Sultan Al Zaabi	Future Sunrise Contracting & General Maintenance	Al Faraana Engineering Consultant	Completed	April-2021	May-2021
2	Villa for Aref Al-Sayyid Saleh	Desert Rock Contractor	Geometric Engineering Consultant	Completed	May-2021	July-2021
3	Villa for Private Residential Villa	Domus Al-Juazirah General Contracting	Smart Concept Engineering Consultancy	Completed	August-2021	September-2021
4	Villa for Abdulaah Yousef Ahmed Al Hamadi	Tajanus General Contracting	Crown Oasis Consulting	Completed	September-2021	October-2021
5	Villa for Mosbeh Mohammed Saleem	Ahmed Al Mismari Contracting	Expert for Engineering Consultancy	Completed	September-2021	November-2021
6	Villa Location : Plot No : 1020 Riyad City, Abu Dhabi.	Alsarah Al Arabi General Contracting	Al Reem Engineering consultancy	Completed	October-2021	November-2021
7	Villa Location : Plot No : 571 Sector RD17, Riyad City, Abu Dhabi.	Al Tohfa Al Sharqiya General Contracting	Ltahadi Engineering Consultant & Interior Design	Completed	October-2021	December-2021
8	Villa for Abdullah Hassan Ahmed Hassan	Al Bareeq Al Lama General contracting	Al Masharif Engineering consultancy	Completed	November-2021	December-2021
9	Villa Location : Plot No : 171 Sector E25, , Abu Dhabi.Island .	Rappid Building General Contracting	Target Engineering Consultants	Running	November-2021	( On Going )
10	Villa Location : Plot No : 98, Al Rahba, Abu Dhabi.	Al Samah General Transporting LLC	Asas International	Running	December-2021	( On Going )
11	Villa Location : Plot No : 175, Sector SH156, Al Shamkha City, Abu Dhabi.	Bin Arada General Contracting & Maintenance	Mdmarr Consulting Engineers	Running	December-2021	( On Going )
12	Villa for Mohammed Hamad Rashid Sayeed Al Neyadi	Blue Line Est.	Al Bunyan Consultant Engineers	Running	December-2021	( On Going )
13	Villa for Khuwaiter Saif Ali Mohammed Al Muqbali	Qalat Hama General Contracting	Arcalae Engineering Consultants & Interior Design	Running	January-2022	( On Going )
14	Villa Location : Plot No : 112, Sector 17, Riyad City, Abu Dhabi.	Amayer General Contracting	Smart Buildings Engineering Consultancy	Running	January-2022	( On Going )



**ALU TECH**  
ALU TECH ALUMINIUM  
AND GLASS WORKS

**PREQUALIFICATION DOCUMENTS**

**Ongoing / Completed Projects in UAE**



**CONSULTANT: AL FARAANA ENGINEERING CONSULTANT**

**OWNER: MOZA RASHID SULTAN AL ZAABI**

**LOCATION: 31 RIYADH CITY, ABU DHABI, UAE**

**PROJECT DURATION: APRIL 2021 – MAY 2021**



**ALU TECH**  
ALU TECH ALUMINIUM  
AND GLASS WORKS

## PREQUALIFICATION DOCUMENTS



**CONSULTANT:**  
GEOMETRIC ENGINEERING  
CONSULTANT

**CONTRACTOR:**  
DESERT ROCK CONTRACTOR

**OWNER:** AREF AL-SAYYID SALEH

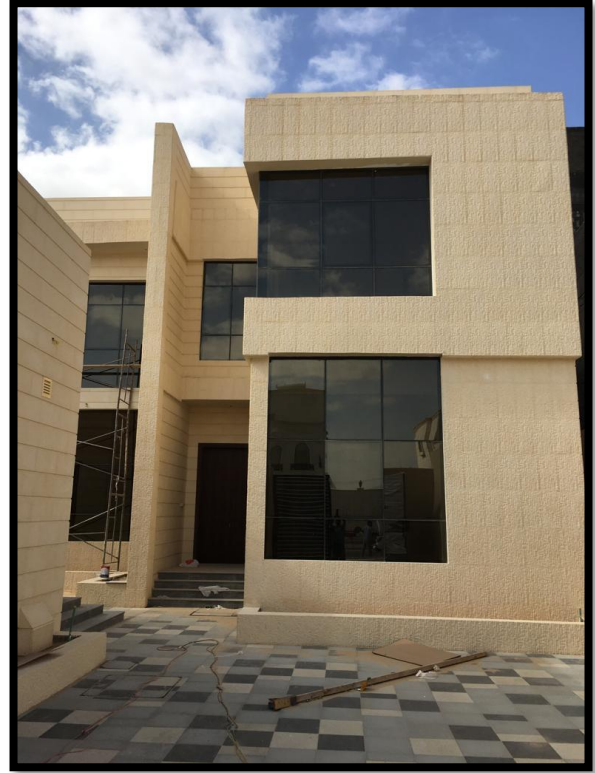
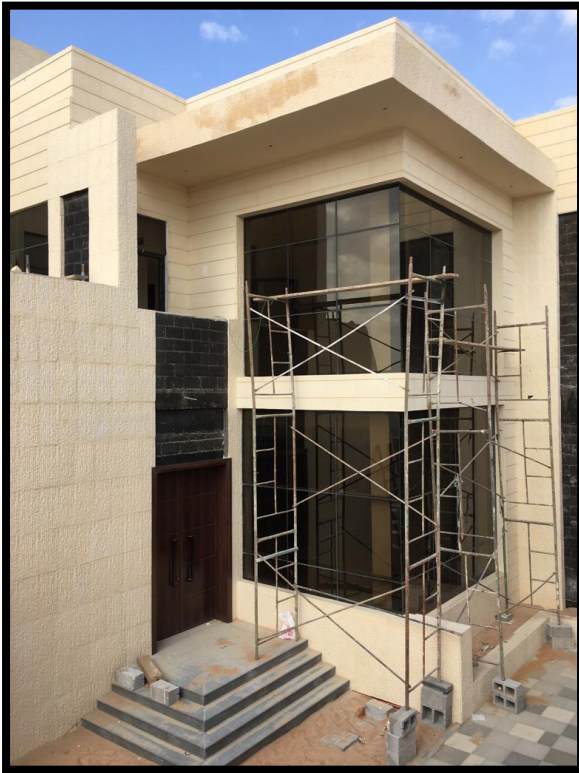
**LOCATION:** PLOT NO: 930, SECTOR: 17,  
RIYADH CITY, ABU DHABI, UAE

**PROJECT DURATION:** MAY 2021 –JULY



**ALU TECH**  
ALU TECH ALUMINIUM  
AND GLASS WORKS

## PREQUALIFICATION DOCUMENTS



**CONSULTANT: SMART CONCEPT ENGINEERING  
CONSULTANCY**

**CONTRACTOR: DOMUS AL-JAZIRAH GENERAL  
CONTRACTING**

**PROJECT: PRIVATE RESIDENTIAL VILLA**

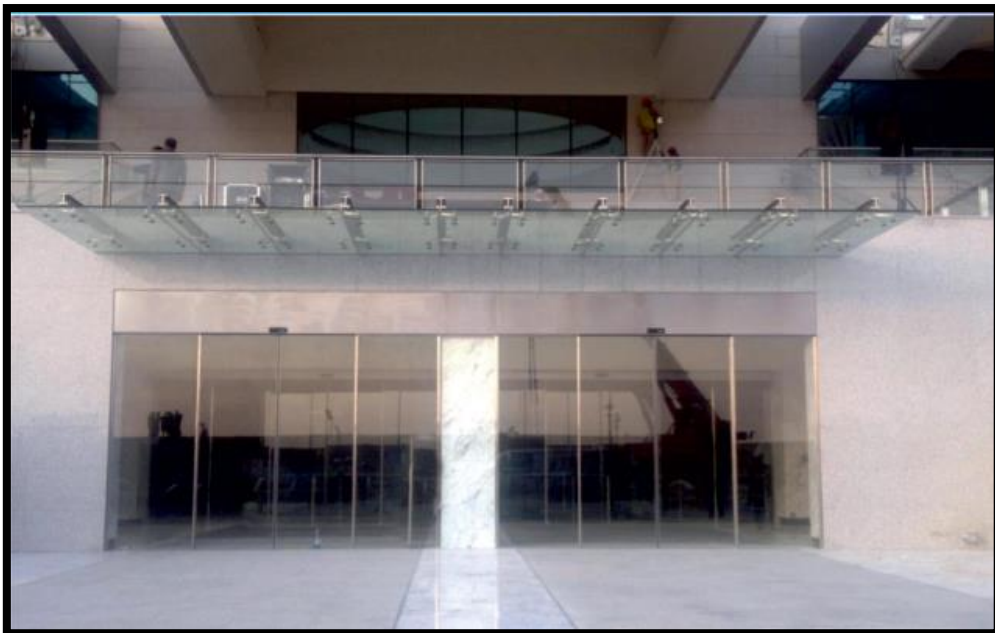
**LOCATION: ABU DHABI, UAE**

**PROJECT DURATION: AUGUST 2021 -  
SEPTEMBER 2021**

**12 Residential Villas at Abu Dhabi**



**ADNEC GRANDSTAND REMEDIAL WORKS**





**ALU TECH**  
ALU TECH ALUMINIUM  
AND GLASS WORKS

**PREQUALIFICATION DOCUMENTS**

## EXPLOSIVE STORAGE FACILITIES AT WESTERN REGION





**PI School Accommodation Buildings at Sas Al Nakheel**



**4 Residential Villa's at Khalifa Bin Zayed City**





**ALU TECH**  
ALU TECH ALUMINIUM  
AND GLASS WORKS

## PREQUALIFICATION DOCUMENTS





**ALU TECH**  
ALU TECH ALUMINIUM  
AND GLASS WORKS

## PREQUALIFICATION DOCUMENTS





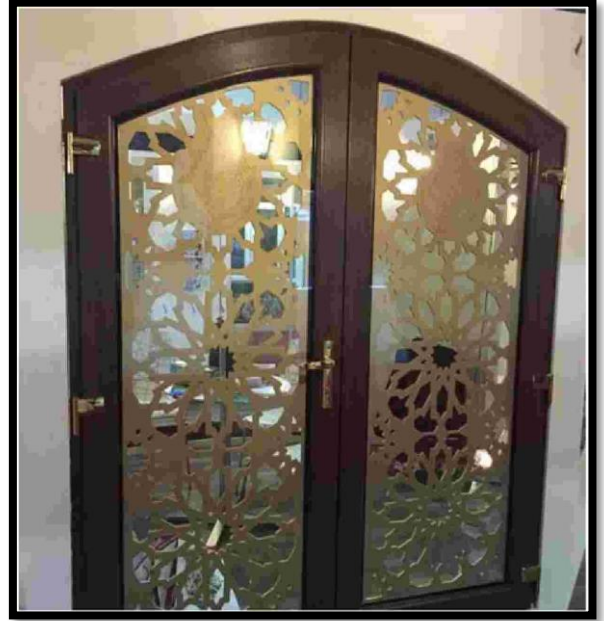
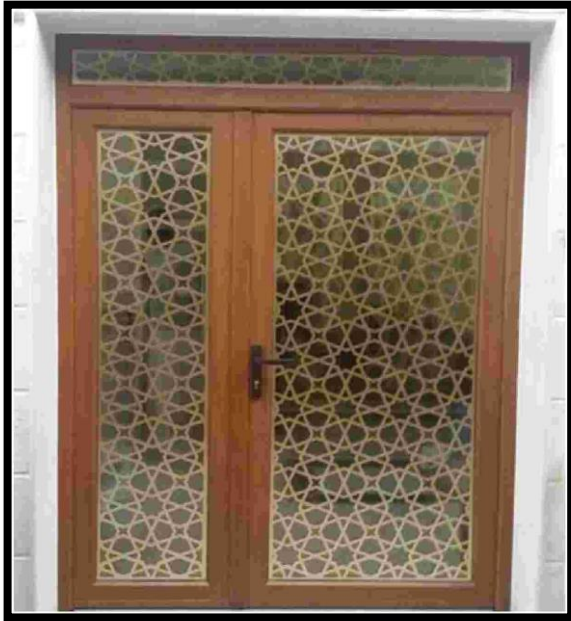
**Residential Villa's at MBZ**



**Private Villa's at Shamkha**



**Decorative Entrance Doors**



## QUALITY POLICY

**ALU TECH Aluminum and Glass Works** is committed to provide its customers with product meeting their requirements and expectations while keeping into consideration the regulatory and legal aspects.

**ALU TECH Aluminum and Glass Works** is also committed to continually improve the Quality Management System through regular review of the quality objectives and its system.

## **OCCUPATIONAL HEALTH AND SAFETY POLICY**

### **ALU TECH OCCUPATIONAL HEALTH AND SAFETY POLICY**

It is the policy of ALU TECH Aluminum & Glass works to care for the health and safety of our personal by providing them with safe working conditions. Our target is zero injuries to our employees, contractors and visitors. The policy applies to all employees, contractors and including the members of the public. Our objective is to comply with all relevant legislation, guidelines, standards and industry codes of practice covering the health and safety of the people in our area of control and is committed to continuous improvement of our activities.

In addition, the company encourages the following practices to achieve its objectives:

- Inform and educate its work force about the recognized hazards in work places and their duties under the laws, regulations and company standards and uniformly enforce compliance with such duties.
- Set goals, targets and periodical review by safety committee of the progress towards plan.
- Establish and implement safe systems of work for our work activities.
- Provide our employees with the appropriate tools and equipment to enable them to work safely.
- Tolerate only the appropriate health and safety performance.
- Carry out comprehensive self-inspection program for safety, health and environmental control and comprehensive accident investigations, recording findings to corrective actions.
- Encourage employees to bring potentially unsafe conditions and practices to the attention of supervisors by providing them with prompt response to their concern when these are judged to be warranted.
- Require the staff to adhere to and disseminate throughout the organization the policy herein set forth and to follow the procedures, established for the implementation of the policy.
- We have communicated these to all our employees and when adhered to, will lead to a safer work place.

## **ENVIRONMENTAL STRATEGY**

### **ALU TECH ALUMINUM AND GLASS WORKS ENVIRONMENTAL STRATEGY**

At ALU TECH, we contribute to the protection of the environment directly as well as through our customers and suppliers.

We do this through our operating practices and by developing and supplying environmentally sound products and services.

We are responsive to the environmental needs of society and the expectations our customers.

It is everyone's responsibility to ensure and continuously improve efficient and economical use of all resources.

To implement these principles we focus on following actions:

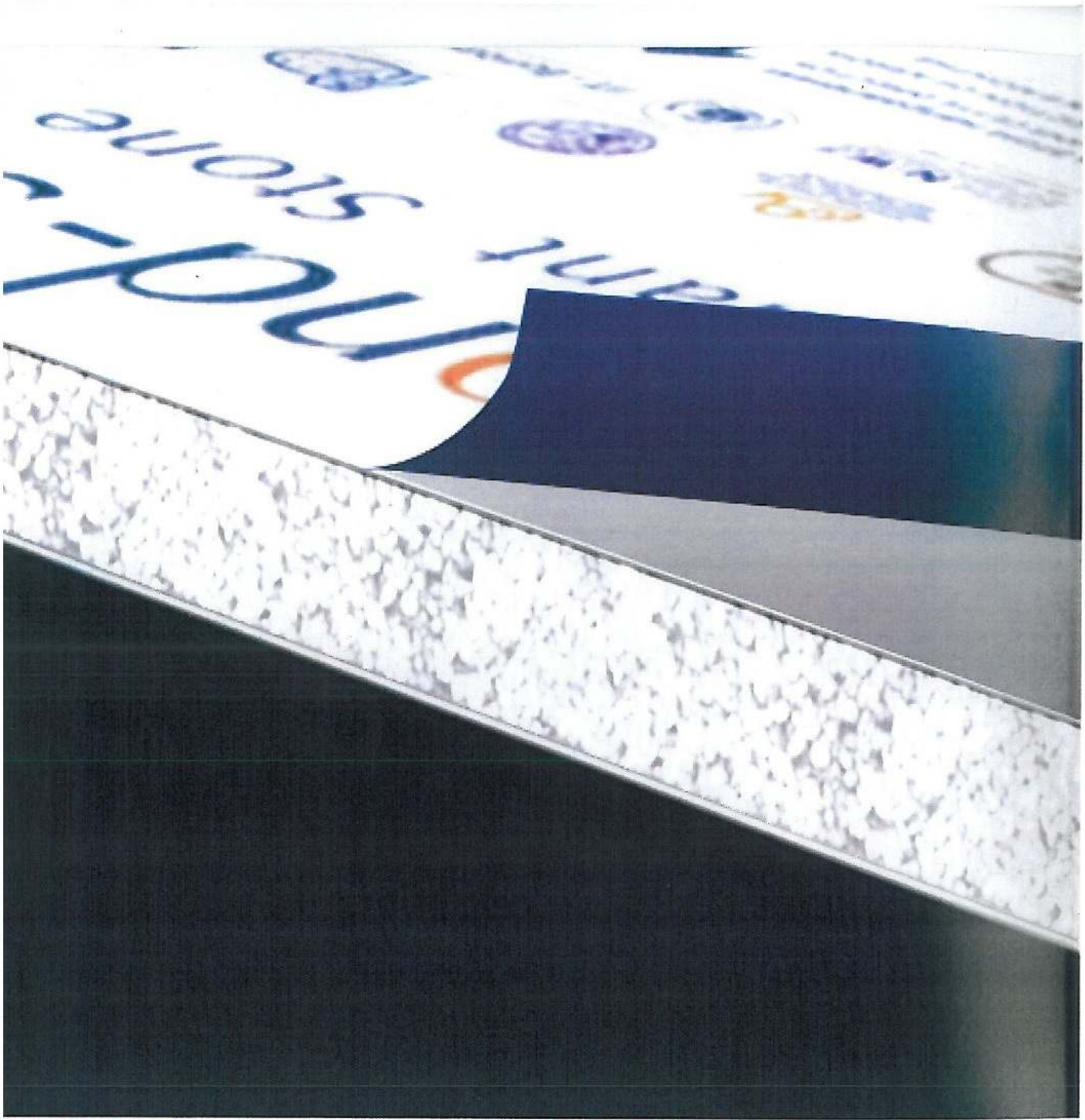
- We optimize the use of energy and materials
- We minimize emissions and waste
- We promote communication of environmental aspects of our industry among all interest groups
- We continually monitor and comply with legal requirements.

# Alubond - A2

Fire Retardant Stone Panel



THE NEW CLADDING WONDER



**Alubond-Stone (FR-A2) is from the Alubond u.s.a range of Fire Retardant Panels.**

Alubond u.s.a is a registered brand name of American Building Technologies located in Rockford Illinois with production bases in Europe, Middle East, Iran, Turkey and India with an annual production capacity of 25,000,000 M2 ( Twenty Five Million square meters ) and the brand ownership is now fully transferred and the brand is now owned by Mulk Holdings.



Alubond-Stone (FR-A2) is the new generation exterior fire retardant Panels with over 90% Stone core sandwiched between two layers of metal skins . Alubond - Stone (FR-A2) patented core formulation with a high percentage of Magnesium Hydroxide provides superior fire retardant capabilities making it an extremely safe cladding solution for buildings worldwide. Alubond – Stone (FR-A2) has passed stringent Fire test certifications all over the world achieving product classifications as per EN 13501 – 1 A2 S1 d0 (Over 90% Stone core content) and EN 13501 – 1 B S1 D0 ( Over 70% Stone core content).



Some MCM Manufacturers use Aluminum Hydroxide due to the easy availability of the mineral in proximity to production plants. Alubond-Stone 's choice of Magnesium Hydroxide as its prime core mineral is based on the following data.

**Reactivity** : Magnesium Hydroxide is much more reactive than Alumina Trihydrate (ATH), whereas ATH releases the available water over a broad range (230° C to 430° C), Magnesium Hydroxide releases the available water over a much narrower range (330° C or 630° F to 430° C). In simple terms this compares to spraying a fine mist of water over a fire (ATH) as opposed to dousing the fire with a full bucket of water (Magnesium Hydroxide). The quick release of water enhances the flame retardant properties of Magnesium Hydroxide.

**Water Release** : Magnesium Hydroxide releases water at a higher temperature than ATH. The higher temperature release is at a more critical point that reduces the spread of the flame.

**Particle Shape** : Magnesium Hydroxide particles, if viewed under a microscope, are plate-like versus the spherical particles of ATH. These plate-like particles overlap one another similar to fish scales or roofing shingles. Pound for pound these plate-like particles offer much more exposed surface area than spherical ATH particles. Therefore more particles are directly exposed to the flame. Also, the plate-like particles provide more strength, flexibility and reinforcement in the finished product as opposed to spherical particles.

**Particle Integration** : Magnesium Hydroxide is a natural mix of particles. There is particle penetration and integration within Magnesium Hydroxide rather than having ATH and calcium carbonate particles mixed side by side. This allows a better distribution of the fire retardant and smoke suppressant properties.

**Stability** : Magnesium Hydroxide has stabilizing characteristics that tend to neutralize acid and toxic smoke. ATH does not provide these benefits.

**Char Ash** : Magnesium Hydroxide during the burning reaction forms a "Char-Ash" in front of the flame, which suppresses the flame.

## Physical properties

- ▶▶ Physical properties such as viscosity cure rate, stress strain and durometer, suggest that magnesium hydroxide is virtually indistinguishable from ATH from a filler performance standpoint.
- ▶▶ Magnesium Hydroxide, because of its acid scavenging properties, can play a useful role in halogenated compounds by reducing acid gas emissions.
- ▶▶ By absorbing the heat, magnesium hydroxide prevents or delays ignition and retards combustion of polymeric materials.



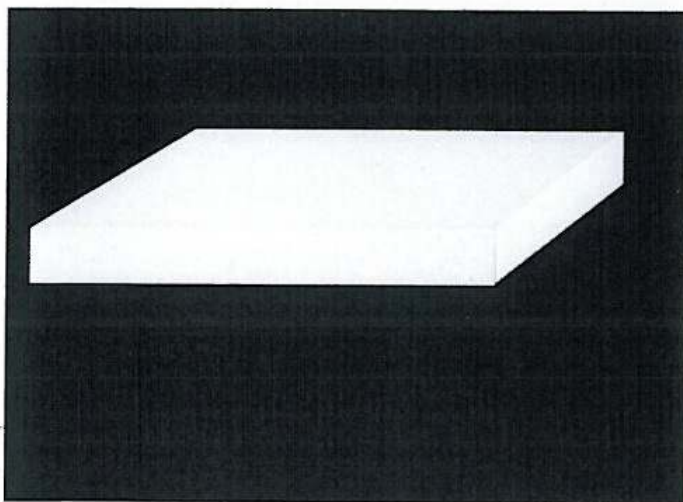
Alubond-Stone Mineral Core

Alubond-Stone  
Fire Retardant Stone Panel



Alubond - Stone's formulated CORE exposed to a temperature over 332°C

## Alubond-Stone (FR A2) - Endothermic Reaction



Magnesium Oxide  $MgO$  (s)

+



+

Water ( $H_2O$ ) (g)



# TECHNICAL DATA SHEET ALUBOND-STONE (FR- B1)

Alubond-Stone  
Fire Retardant Stone Panel

## Alubond-Stone (FR- B1)

Panel Thickness	4 mm
Skin Thickness	0.5 mm
Weight	7 Kg / M <sup>2</sup>
Alloy Series	1xxx, 3xxx, 5xxx
Width	1250mm, 1500 mm
Length	upto 6000 mm

\*special sizes on request, min quantity 2000sqm (incl 1000mm width)

## Fire Behaviour Properties

Fire Behaviour	FR Classification	Section Number	Document Number	Testing Agency
BS 476 part 6&7	part 6 class 0 part 7 class 1	6&7	Certificate No : CF 5061	EXOVA WARRINGTON-UK
EN 13501-1	B, s1, d0	1	Certificate No : ME 5059	EXOVA WARRINGTON-UK
ASTM E 119	Min 1 hr 42 Min fire rating	-	Report No : 01.12694.307	SOUTH WEST RESEARCH INSTITUTE
DIN 4102-1	Class B1	Part 1	Report No : 2013-1400-2	EXOVA WARRINGTON-UK
NFPA 285	Assembly Meet The requirements / Passed	As per UAE civil defense code 4.2.6	Certificate No : WHI15 - 26553701	Intertek usa & Thomas Bell Wright International Consultant
ASTM E 84-12	Class A : Passed	As per UAE civil defense code 4.2.4 &4.2.5	Certificate No : WHI15 - 26553702	Intertek usa & Thomas Bell Wright International Consultant

## Core Properties

Core	CLASS B	Mg (OH) <sub>2</sub> Based polymeric bonded core
------	---------	--



# TECHNICAL DATA SHEET ALUBOND-STONE (FR-A2)

Alubond-Stone  
Fire Retardant Stone Panel

## Thermal Properties

Thermal resistance R	ASTM C518	M2 K/W	0.007	0.009
Temperature resistance	ASTM C518	°C	-50....+80	

## Core Properties

Core	EN +1:2007-13501 A1:2009 CLAUSE 8 & NFPA 285 /BS6853 UBC5-17	CLASS- A2,S1,d0 Passed	Mg (OH) <sub>2</sub> Based polymeric bonded core
Surface Burning test	ASTM E84	.....	passed
Fire Behaviour	AS 1530 PART 3	.....	passed
Fire Behaviour	BS 476	Part 6 Class 0 & Part 7 Class 1	Passed

## Surface Finish Properties

Type / Finish	PVDF / FEVE			
Gloss @60°C	ECCA T2	%	PVDF 30-45	FEVE 20-80
Pencil hardness	ECCA T4	.....	min HB	

## Accoustical Properties

Sound absorbtion factor	ISO 354	.....	0.05	
Sound transmission Loss (Rw)	ASTM E90	dB	STC: 26	OITC:22



# TECHNICAL DATA SHEET ALUBOND-STONE (FR-A2)

Alubond-Stone  
Fire Retardant Stone Panel

## Alubond-Stone (FR - A2)

Panel Thickness	4 mm
Alloy Series	1xxx, 3xxx, 5xxx
Width	1000 mm, 1250mm, 1500 mm
Length	upto 6000 mm

\*special sizes on request, min quantity 2000sqm (incl 1000mm width)

## Dimension Tolerance

Thickness	± 0.05	0.5 mm
Weight	± 0.05	8 Kg/m <sup>2</sup>
Standard Width	± 2	1250 mm
Panel thickness	± 0.03	4 mm

## Mechanical Properties

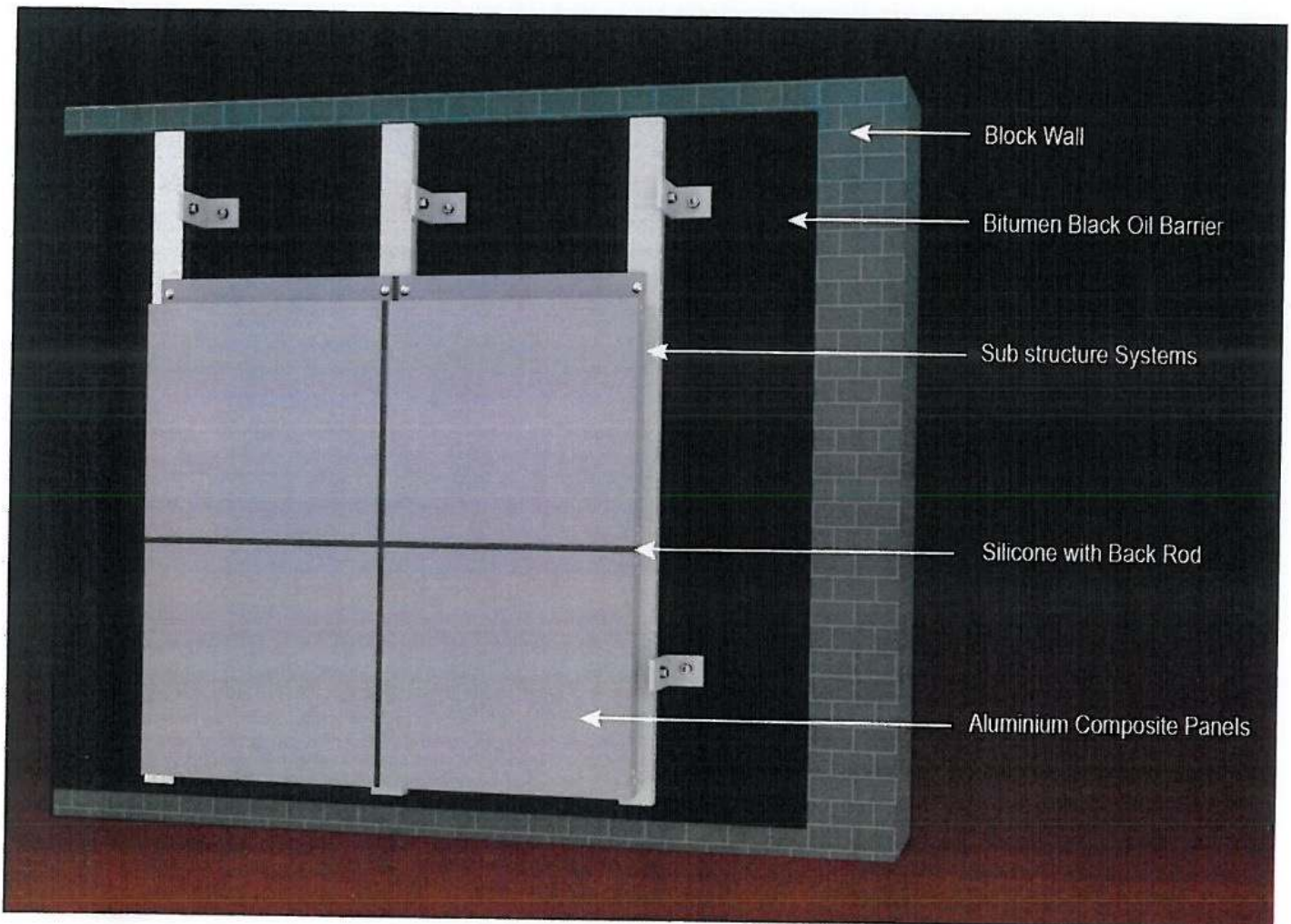
			Alloy 1xxx,	Alloy 3xxx,	Alloy5xxx
Section Modulus(W)	DIN 53293	cm <sup>3</sup> /m	1.62	1.7	1.75
Rigidity (Poisson's ratio $\mu = 0,3$ )	DIN 53294	KN cm <sup>2</sup> /m	2300	2320	2400
Alloy	EN 573-3	.....	EN AW- 1100	EN AW- 3105	EN AW- 5005A (Al mg1)
Temper	EN 515	.....	H16/H18	H14/H16	H16/18
Modulus of Elasticity	EN 1999 1-1	N/mm <sup>2</sup>		≥70000	
Tensile Strength of Aluminium	EN 485-2	N/mm <sup>2</sup>	Rm ≥ 135	Rm ≥ 140	Rm ≥ 145
0.2% Proof Stress	EN 485-2	N/mm <sup>2</sup>	Rpo ≥ 85	Rpo ≥ 90	Rpo ≥ 95
Elongation	EN 485-2	%	A <sub>50</sub> ≥ 6	A <sub>50</sub> ≥ 5	A <sub>50</sub> ≥ 5
Linear Thermal Expansion	EN 1999 1-1	mm/m @100°C		2.4	



## PROBLEM

Alubond-Stone  
Fire Retardant Stone Panel

High LDPE Core Panels With Insulation & Sealed Silicon System  
With ASTM E119 Fire Wall

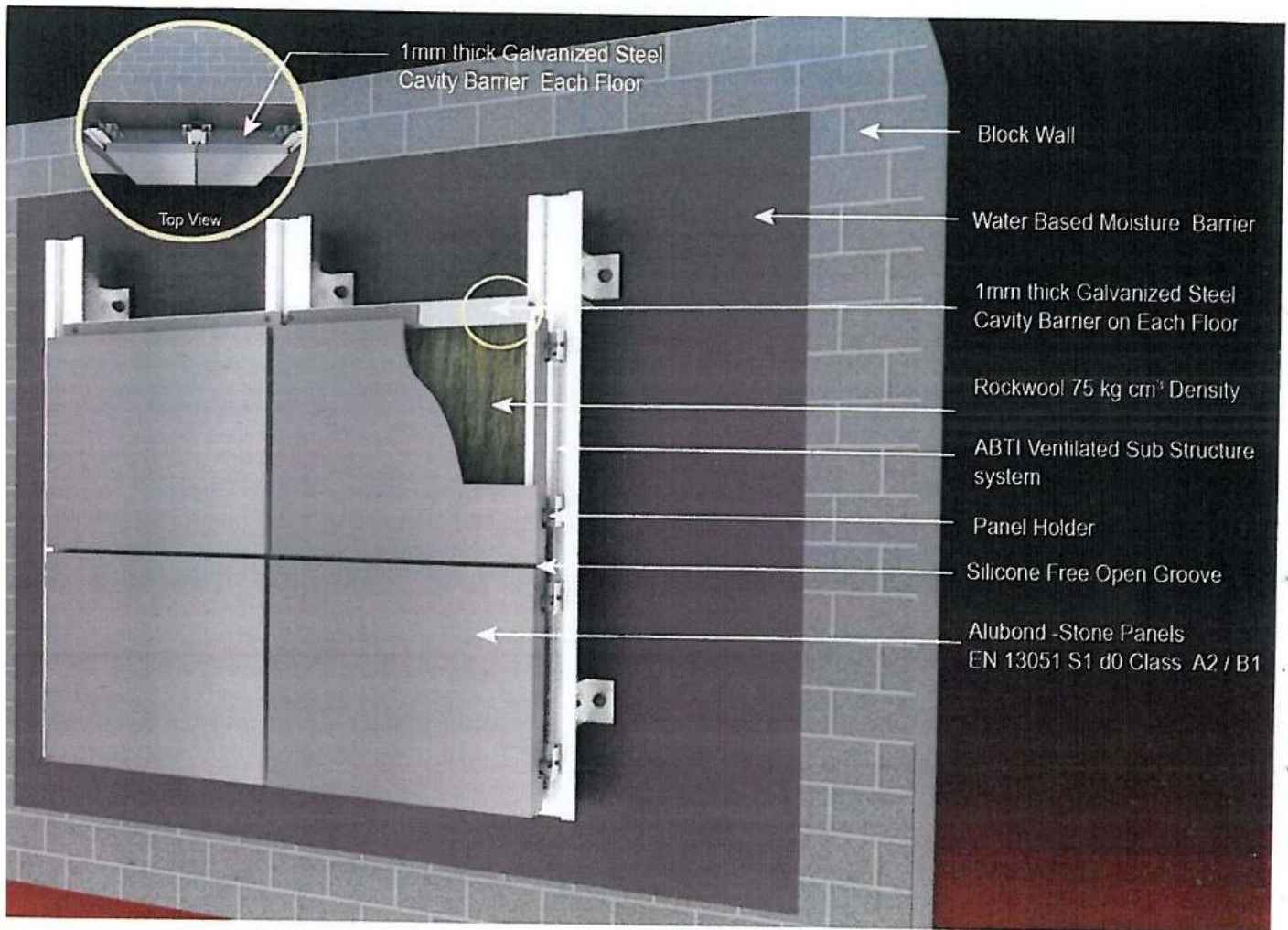


Four primary reasons for spread of fire in a typical LDPE core ACP Cladded Buildings in UAE & Worldwide

- The foam backer rod is one of the first to ignite and burns the polyethylene sealant. Fire moves swiftly through the continuous sealant and backer rod aided by bitumen paint.
- The cavity caused due to sealed façade and lack of cavity barrier, creates a tunnel effect for fire to spread up the floors very quickly.
- The LDPE core of the aluminium composite panel and aluminium skin both melt and droplets contribute to further spread of fire
- The fire spreads both from the back of the facade and front of the façade aided by winds and cavities and further fuelled by droplets of LDPE and falling debris of burning panels .
- No wonder we see buildings engulfed in fire within minutes !



Silicon Free Open Groove NFPA 285 Compliant  
Ventilated Substructure System Certified By Third Party



Usage of super fire retardant Alubond - Stone Panels instead of highly flammable LDPE core panels.

- Instead of Bitumen the wall is coated with fire rated moisture free paint
- ABTI system is silicon free open groove system thereby not using backer rods and sealants which aid propagation of fire.
- Cavity barrier is installed at regular intervals depending on the size of the building.

Use of Alubond - Stone (FR A2) combined with ABTI Open Groove Ventilated substructure system provides the solution for a fire safe cladding.



## Environment

### MATERIAL CONTENT

Multimedia (pdf) (en) (en) (en) (en) (en)

COMPONENT	MATERIAL	AVAILABILITY	MASS%	ORIGIN
Top Sheet & Bottom Sheet	Aluminum	Metal Production	30	Turkey
Core Material	Fire Rated Mineral Core	Mineral	68	Dubai
Top Sheet Coating	PVDF	Polyester Resins	1	Turkey
Bottom Sheet Coating	PE	Polyester Resins	1	Turkey

### ADDITIONAL ENVIRONMENTAL INFORMATION

PRE-CONSUMER RECYCLED CONTENT	%
POST-CONSUMER RECYCLED CONTENT	%
VOCEMISSIONS	
WATER CONSUMPTION	2.30E+03 m3

### RECYCLING OR REUSE

All Alubond U.S.A.® FR-A2 composite panel waste generated during manufacturing and at the end-of-life are resulting as recyclable or reusable materials. The aluminum scrap occurs during sizing activities are collected and directed to regional recycling services. The fire-rated core leaving the manufacturing system as rate of waste can be taken into the manufacturing system to reuse for the same product productions.

### ENERGY

RENEWABLE ENERGY	16.41 %	1.44E+03 MJ
NON-RENEWABLE ENERGY	83.59 %	7.34E+03 MJ

### STANDARDS

-TS/EN ISO 9001:2008  
-ME 5063  
-ASTM E119  
-TSEK 300

### CERTIFICATIONS



### MANUFACTURER CONTACT INFO

NAME	Alubond TURKEY   Aluminum Composite Panel
PHONE	+90 262 746 1420
EMAIL	info@alubond.com.tr
WEBSITE	www.alubond.com.tr

www.UL.com/environment | environment@ul.com

The information presented herein is a summary of content contained in the manufacturer's ISO 14001-consultant EPD certified by UL. For more information, visit www.UL.com/environment, download the full EPD (UL, the UL logo, and UL certification marks are trademarks of UL LLC. All other marks are the property of their respective owners).

РОССИЙСКАЯ ФЕДЕРАЦИЯ  
СЕРТИФИКАТ СООТВЕТСТВИЯ  
(обязательная сертификация)

№ C-RS.ПБ58.В.00550 ТР 1372258  
(номер сертификата соответствия) (учетный номер бланка)

**ЗАЯВИТЕЛЬ** Alubond Europe d.o.o. Адрес: Nemanjina No. 130, 26320 Banatski Karlovac, Serbia,  
(наименование и место нахождения заявителя) Сербия. Телефон ++ 381 13 651 041 (42, 43), факс ++ 381 13 652 852.

**ИЗГОТОВИТЕЛЬ** Alubond Europe d.o.o. Адрес: Nemanjina No. 130, 26320 Banatski Karlovac, Serbia,  
(наименование и место нахождения изготовителя продукции) Сербия. Телефон ++ 381 13 651 041 (42, 43), факс ++ 381 13 652 852.

**ОРГАН ПО СЕРТИФИКАЦИИ** ОС "Альфа" "Пожарная Безопасность" ООО "Альфа" "Пожарная  
(наименование и местонахождение органа по сертификации, удостоверяющего сертификат соответствия) Безопасность". Россия, 301760 Тульская область, г. Донской, ул. Горноспасательная, д. 1А, тел./факс: +7 (495)648-78-98. ОГРН: 1107154016166. Аттестат рег. № ТРПБ. RU.ПБ58 выдан 28.12.2010г. МЧС России.

**ПОДТВЕРЖДАЕТ, ЧТО** Огнестойкие алюминиевые композитные панели типа  
**ПРОДУКЦИЯ** ALUBOND U.S.A FR A2, торговой марки ALUBOND

(информация об объекте сертификации, позволяющая идентифицировать объект) U.S.A (толщиной от 3 мм до 6 мм), с толщиной  
алюминиевых покрывающих слоев от 0,3 мм до 0,5 мм, с огнестойким минеральным наполнителем, выпускаемые по GBT 17748-2008 и EN 13501-1. Серийный выпуск.

код ОК 005 (ОКП)  
52 7500

**СООТВЕТСТВУЕТ ТРЕБОВАНИЯМ** Технический регламент о требованиях пожарной  
**ТЕХНИЧЕСКОГО РЕГЛАМЕНТА** безопасности (Федеральный закон от 22.07.2008 N  
(ТЕХНИЧЕСКИХ РЕГЛАМЕНТОВ) 123-ФЗ)

(наименование технического регламента (технических регламентов), на соответствие требованиям которого (которых) проводилась сертификация) Группа горючести – Г1(слабо горючие) по ГОСТ 30244-94; группа воспламеняемости – В1(трудновоспламеняемые) по ГОСТ 30402-96; группа дымообразующей способности – Д1 (с малой дымообразующей способностью) по ГОСТ 12.1.044-89, п. 4.18; группа по токсичности продуктов горения – Т1(малоопасные) по ГОСТ 12.1.044-89, п. 4.20  
Класс пожарной опасности строительных материалов – КМ1

код ЕКПС

код ТН ВЭД России  
7606 11 100 0

**ПРОВЕДЕННЫЕ ИССЛЕДОВАНИЯ** Протокол сертификационных испытаний № 953-С/ТР от  
(ИСПЫТАНИЯ) И ИЗМЕРЕНИЯ 26.12.2012 г. ИЛ "Альфа" "Пожарная Безопасность" ООО  
"Альфа" "Пожарная Безопасность" № ТРПБ.RU.ИН41 от 28.12.2010 г.

**ПРЕДСТАВЛЕННЫЕ ДОКУМЕНТЫ** Сертификат Системы Менеджмента Качества ГОСТ Р ИСО  
(документы, представленные заявителем в орган по сертификации в качестве доказательства соответствия продукции требованиям технического регламента (технических регламентов)) 9001-2008 № СДСГК RU.OC05.K01473 от 22.11.2012 г.

**СРОК ДЕЙСТВИЯ СЕРТИФИКАТА СООТВЕТСТВИЯ** с 26.12.2012 по 25.12.2015



Руководитель  
(заместитель руководителя)  
органа по сертификации  
подпись, инициалы, фамилия

*(Handwritten signature)*

А.А.Гомзов

Эксперт (эксперты)  
подпись, инициалы, фамилия

*(Handwritten signature)*

А.П.Губенко



# CERTIFICATION

## ALUBOND-STONE (FR - B1)

**Alubond-Stone**  
Fire Retardant Stone Panel

**Intertek**

### Certificate of Compliance



You have been awarded:

#### Intertek Warnock Hersey Mark for Metal Composite Wall Panels

NFPA 285 (2012)

Certificate number: WHI15 - 26553701

**Organization:**

**Eurocon Building Industries FZE (Group of Mulk Holdings International)**

P.O. Box 42642  
Hamriya Free zone  
Sharjah, United Arab Emirates

Intertek warrants that the Factory Production Control (FPC) system has been inspected and found to comply with the requirements of the above scheme which include the testing of products, the quality management of the Factory Production Control system and the testing of materials and systems. Intertek's FPC system is available to the schemes and has been registered with the scheme. For the product details in the certificate, refer to the following website:

**Product:** Exterior wall containing Alubond USA - FR B1 Aluminum Composite Panel 4 mm

Test Standard	Test Results
NFPA 285 (2012)	Passed

For full certification details and wall assembly construction, refer to Listing Report ref. Spec ID 35247 & Design Listing ref. EBI-MCMWP 30-01

**Certification body:** Intertek Testing Services NA, Inc.

**Initial registration:** June 04, 2015

**Date of expiry:** June 04, 2020

**Issue status:** 1

Dustin Behling  
Certification Coordination Manager  
Name

*Dustin Behling*  
Signature

04/06/2015  
Date

www.intertek.com

Registered address:  
Intertek Testing Services NA, Inc. 545 E. Algonquin Rd., Arlington Heights, IL 60005 USA

**NFPA 285 TEST**

**BS EN 13501-1 : 2007**



# Alu Tech Aluminium & Upvc



# Alu Tech Aluminium





**Alu Tech Aluminium**



**Alu Tech Aluminium**



**Alu Tech Aluminium**



**Alu Tech Upvc**



**Alu Tech Aluminium**



**Alu Tech Aluminium**

# Alu Tech Aluminium



# Alu Tech Aluminium





Alu Tech Aluminium



Alu Tech Aluminium



ALU tech  
ALUMINUM



Alu Tech Aluminium

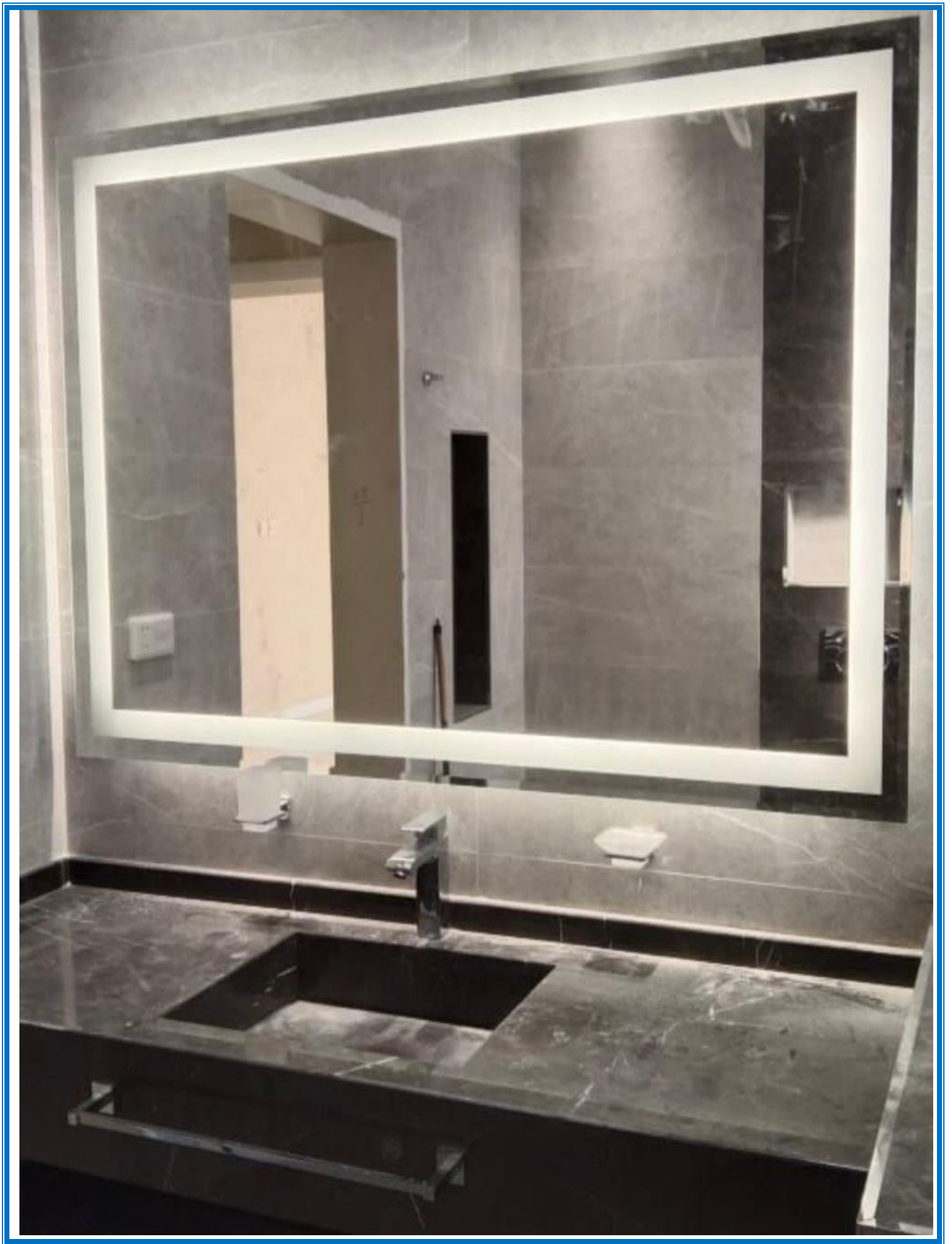
Alu Tech Aluminium



Alu tech ALUMINUM













**Alu Tech Aluminium**



**Alu Tech Aluminium**











